

ProView PVR-8140 Decoder — Quick Start Guide

Contacting Harmonic:
att-rsn-help@harmonicinc.com

<https://www.harmonicinc.com/documentation/att-rsn/>

1. Rack Mounting

- It is recommended the PVR 8140 be installed and secured in a standard EIA 19" rack
- Electrical connection: The ProView 8140 is powered by an AC power supply.
- The PVR 8140 is intended for a maximum operating ambient temperature of 50° C. Please ensure there is enough room for a column of cold air to circulate on the front of the chassis and a column of hot air to circulate on the rear of the chassis, from bottom to the top of the rack

2. Cable Connections

Once you have installed and configured the XOS IRD, and assigned the desired program(s) to one or more ASI output ports, you are ready to proceed with connecting and configuring the PVR 8140

Please refer to the PVR 8140 backplane and sample wiring diagrams on Page 2 of this guide.

Note: Eight (8) Mini-BNC to BNC adapter cables are provided with each XOS IRD.

1. Connect the ASI cable from the XOS IRD ASI port to the PVR 8140 ASI input.. If you have more than 8 analog channels, cascading the ASI as illustrated in the Sample Wiring Diagram (Section 8 of this guide).
2. Connect the composite video and audio cables to your analog modulator or analog Ad Insertion system. You can initially connect to a monitor to verify composite output.

3. Configuring the Decoder Input & Output

The PVR 8140 can be configured via the front panel (the menu tree is in Section 6) or remotely through the management IP port and embedded GUI.

The PVR 8140 decoder has two modes:

- **Multiplex** - In Multiplex mode the device generates a new stream and user can select which programs to pass and also able to modify the bitrate.
- **Transparent** - In transparent mode, the whole output stream is passed to the output unchanged.

The steps for configuring the PVR 8140 via the front panel are:

1. Navigate to **Root > Input > Primary Port Selection**.
2. Select **ASI** as the input port.
3. Navigate to **Root > Decoding > Configuration > Program Selection > Service Mode**.
 - a. Select **Program** to output.
A list of all input programs received displays.
 - b. The screen displays the program number (decimal, program name if the input stream provides an SDT table and the status (CAS/ scrambled or FTA/free to air).
 - c. Select a program.
 - d. Verify output video and audio on your monitoring device

If you would like of control the PVR8140 via the IP management interface, please set up the IP address as described in Section 5 of this guide.

4. OPTIONAL - Setting up DTMF (Cue Tones. for Analog Ad Insertion

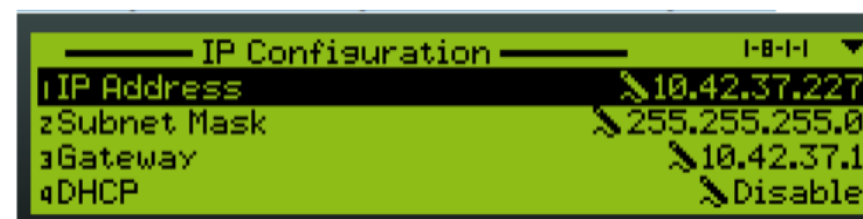
If you have an analog ad insertion system and need to set up DTMF tones on the PVR, Wire the PVR 2nd Audio left output +/- to the DTMF input on the ad insertion system. Please follow these steps via the front panel to configure the correct DTMF for each channel (note DTMF may be unique for each channel..

1. Select **Decoding**.
2. Select **Configuration**.
3. Select **DPI**.
4. Select **Trigger** (SCTE 35., and set the following parameters:
 - OON Trigger > GPI3 & DTMF2. Trigger (SCTE 35. >
 - OON DTMF> Enter up to four DTMF tones (0-9, *)
 - DTMF Mode - enable
 - OON DTMF [024*] -
TONE1 - 0
TONE2 - 2
TONE3 - 4
TONE4 - *
 - RTN Trigger > GPI3 & DTMF2. Trigger (SCTE 35. >
 - RTN DTMF> Enter up to four DTMF tones (0-9, #)
 - RTN DTMF [024#] -
TONE1 - 0
TONE2 - 2
TONE3 - 4
TONE4 - #
5. Verify that the Ad Insertion is working.
6. Adjust pre-roll on the PVR for timing adjustments as necessary.

5. OPTIONAL - Setting up Management IP Address

In order to use the Management IP interface, you will need to first configure the management IP parameters via the front panel:

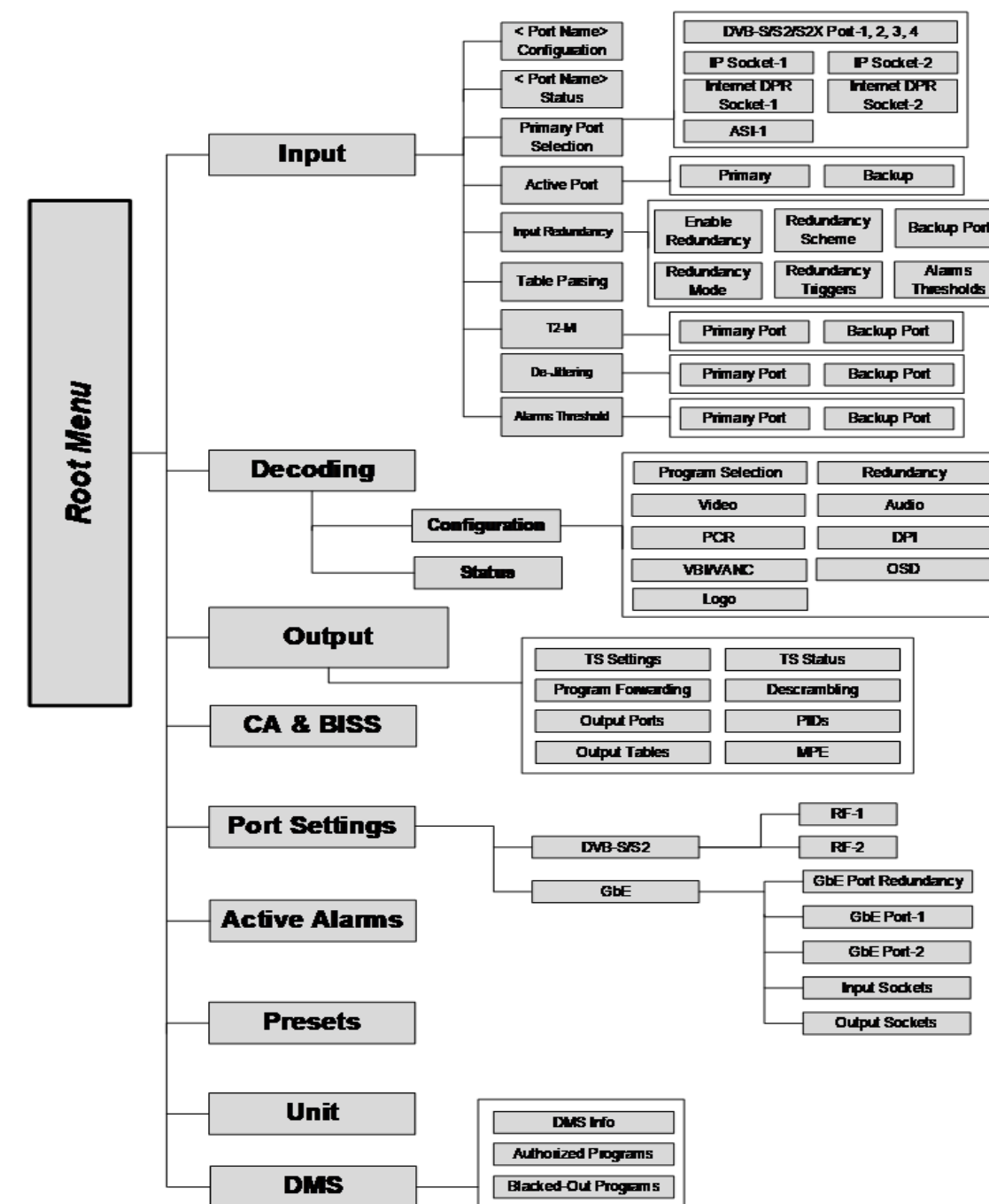
1. Press **ENTER** on the keypad.
The root menu appears.
2. Navigate to **Unit > Management Port > IP Configuration**



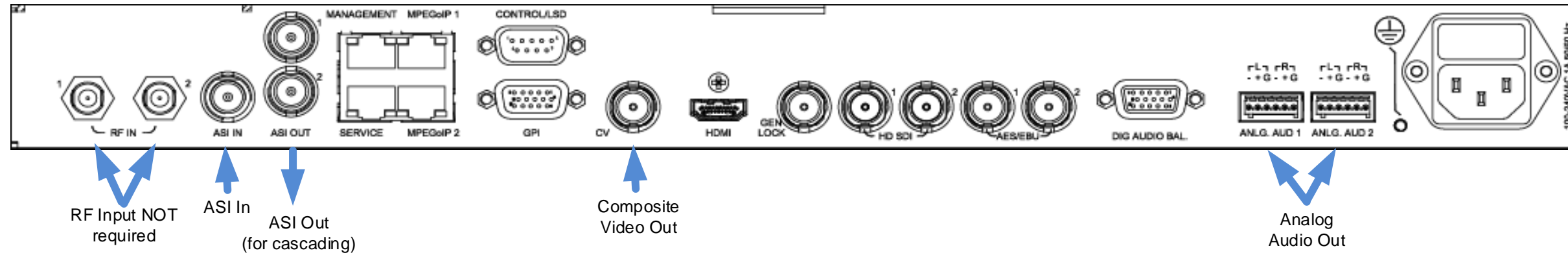
3. Set the **IP Address**, **Subnet Mask**, and **Default Gateway** for the management port. Make sure that DHCP is set to **Disable**.

For further details on the management IP interface and its usage, please refer to user manual on using the embedded GUI.

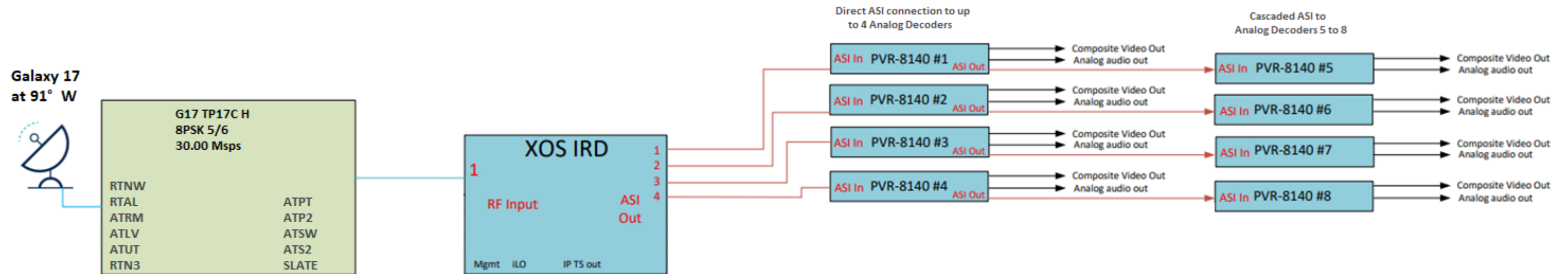
6. PVR 8140 Front Panel Menu Heirarchy



7. PVR 8140 Back Panel



8. Sample Wiring Diagram



Notes:

- Each BNC output port on XOS IRD can be configured for ASI or SDI
- 4 mini-BNC to BNC adaptor cables are supplied with each XOS IRD
- The amount of PVRs connected to the XOS IRD depend on the site requirements