

# DMS™

## VIDEO DISTRIBUTION MANAGEMENT SYSTEM



Video distribution networks of broadcast content to operators and affiliates can touch thousands of reception sites, where edge devices are used for reception, decryption and processing – decode, transcode or passthrough the services.

To allow secure transmission against unauthorized viewing, apply advanced processing such as content localization and regional blackouts, and maintain and update the network, a central administration, control and authorization management system is required.

Harmonic's DMS™ video distribution management system provides broadcasters and content providers with powerful control tools over large populations of edge devices. It allows flexible device or group addressability, entitlements and authorization management, as well as over-the-air (OTA) in-band control of Harmonic XOS in edge configuration.

The DMS solution is ideal for applications including content distribution to operators, affiliates and service providers, as well as distribution for digital terrestrial TV services.

DMS enables secure broadcast of video content over satellite or IP delivery networks, helping content providers to deliver content to authorized recipients only.

Based on open standards such as DVB Simulcrypt and AES, the DMS provides individual or group entitlement control with any DVB-compliant CA system.

Service providers can lower operating expenditures and eliminate the need for costly remote site visits by managing the video distribution network from a single control system with advanced scheduling, configuration, software upgrade and inventory management capabilities.

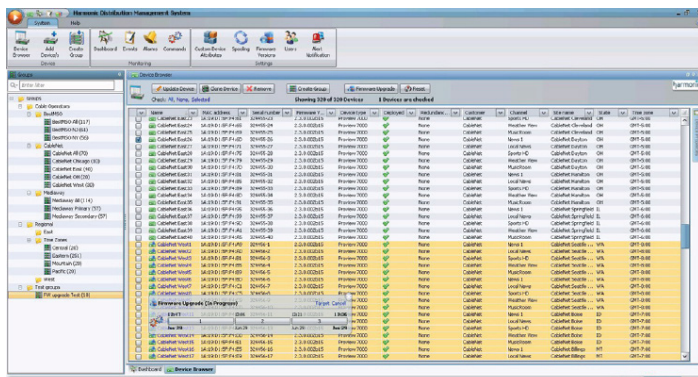
Powerful and innovative GUI tools, such as a customizable database and advanced searching, filtering and sorting tools, allow easy administration, grouping and addressing of thousands of devices.

### HIGHLIGHTS

- Management system for video distribution networks
- Over-the-air (OTA) in-band control of multiple remote devices
- Integrated with DVB scrambling solutions for secured content delivery
- Regional program switching and blackout control
- Remote firmware upgrades
- Facilitates maintenance with device grouping and bulk operations
- Integrated event scheduler enables automated operation
- State-of-the-art GUI for streamlined control and operation
- Remote device monitoring over return channel (where available)
- Centralized control saves OPEX by avoiding costly site visits

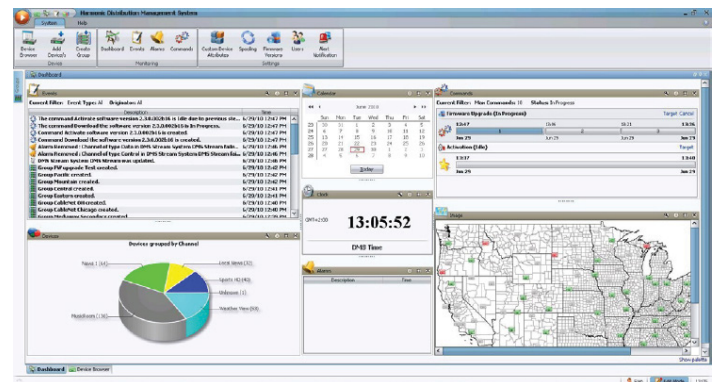
### Devices administration and grouping

- Central database manages all device-related information
- Customizable device group attributes
- Device grouping by applying filters on attributes
- Flexible addressability by device or group
- Easy add / remove / edit of single or multiple devices
- Import device and affiliate information from Harmonic OneCare portal and from file



### Automated operation by an event scheduler

- Any operation can be pre-scheduled for delayed execution
- Recurring operations – daily, weekly, monthly schedule
- Full control of command transmission period and activation time
- Active tasks snapshot view



### Content Security

- Open-system interface with all major DVB-simulcrypt CA systems
- Subscriber management and CA entitlements per device or groups of devices

### Over-the-air firmware update

- Firmware upgrade of remote receivers
- Upgrade of a single device, a group or all devices simultaneously

### Remote device management

- Service replacement / Local content
- Regional blackouts
- CA entitlements
- RF Carrier tuning
- Device license updates

### User Interface

- State-of-the-art intuitive GUI allows easy control over large device populations
- Advanced navigation, searching and filtering tools
- Customized dashboard view for system monitoring

### System control and access

- Client-server architecture allows management from remote clients
- Multiple user levels for controlled system access
- Automatic or manual database backup

### Diagnostic tools and Auditing / Reporting

- System alarms view with sort / filter support
- Event log records every transaction in the system
- User activity log for all users
- Command history per group/device
- System generated audio-visual alerts
- Custom reports

### Device Support

- XOS Advanced Media Processor

## SPECIFICATIONS

### ORDERING INFORMATION

Feature	Description
DMS-HWP-3G-A	DMS SERVER, 1RU HPE DL360 G10, WS2019, SQL2017 STANDARD, 2 X PROC 4208, 64GB RAM, 2 X 480GB SSD
DMS-SW-X1H	DMS STANDARD EDITION W/LICENSE FOR UP 100 XOS IRD
DMS-SW-X2H	DMS STANDARD EDITION W/LICENSE FOR UP 200 XOS IRD
DMS-SW-X5H	DMS STANDARD EDITION W/LICENSE FOR UP 500 XOS IRD
DMS-SW-X1T	DMS STANDARD EDITION W/LICENSE FOR UP 1000 XOS IRD
DMS-LIC-ADDX1H	DMS - LICENSE PER ADDITIONAL 100 XOS IRD

### SERVER HARDWARE

Server Model	HPE ProLiant DL360 Gen10
Hard Drives	Dual SSDs – RAID 1 – hot swappable
NIC	Four 1GbE ports (RJ45)
Power	Dual redundant power supplies, hot swappable 100/240 VAC, 50/60 Hz input Max power @ Room temp – 265W (904 BTU) Max power @ Max temp – 325W (1109 BTU)
Environmental	Operating temperature: 10°C to 35°C (50°F to 95°F) Non-operating temperature: -30°C to 60°C (-22°F to 140°F) Operating humidity: 8% to 90% EMC Class A: FCC, CE, VCCI, KC, CCC, TCVN, CTicks, BSMI Product Safety: US/CA NRTL, CB Scheme, BIS, CCC, EAC, BSMI Product Materials: EU RoHS, China RoHS, EU REACH, WEEE
Physical	1-RU server Dimensions (HxWxD): 4.3 x 43.5 x 70.7 cm (1.7 x 17.1 x 27.8 in) Weight: 15kg (33 Lbs)
Management (IPMI)	Yes HW alarm monitoring Integrated in NMX SW (thru iLO)
Operating System	Windows Server 2019 / SQL Server 2017